

Russell Group universities support

261,000 jobs

across the whole of the UK



Greater than the entire population of the cities of Aberdeen or Plymouth



The direct, indirect and induced economic impacts of Russell Group universities

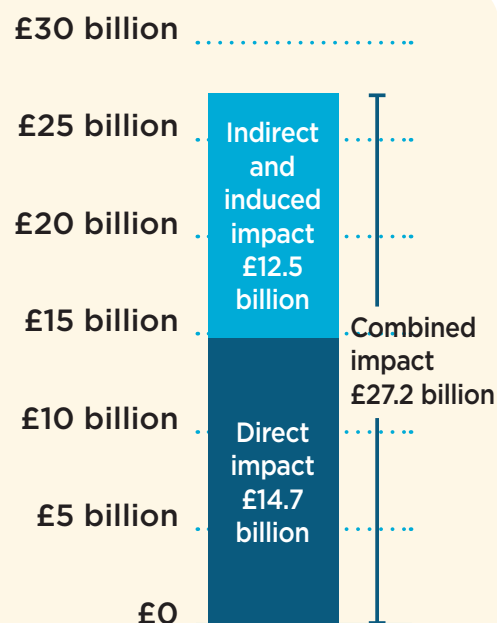
Our universities' impact on the UK economy includes the **direct impact** of their spending on staff, buildings and goods and services.

Our spending also has an "**indirect**" or "multiplier" effect. The businesses that supply our universities employ staff and make their own purchases nationwide.

Beyond these effects, all our staff spend wages on goods and services across the economy, such as on housing, utilities, food, transport and other needs. These are typically referred to as "**induced impacts**".

In addition, the **spending of international students** in local economies generates further knock-on positive effects across the UK.

Analysis by London Economics shows that the direct, indirect and induced impacts on the UK economy of Russell Group universities' spending in 2015/16 and the spending of international students starting qualifications at the 24 universities in 2015/16 amounts to **£27.2 billion**.



Russell Group universities are anchor institutions in their regional economies.

The activities of our 24 universities support over **261,000 full-time equivalent jobs**. This includes **153,000 direct employees** in 2015/16 and an **additional 108,000 jobs** supported by the expenditure of the universities, their staff and international students.

£27.2 billion

The direct, indirect and induced impact of Russell Group universities on the UK economy, by university location



Scotland and Northern Ireland

£3.0 billion



18,480 directly employed
12,525 indirect jobs supported across the UK

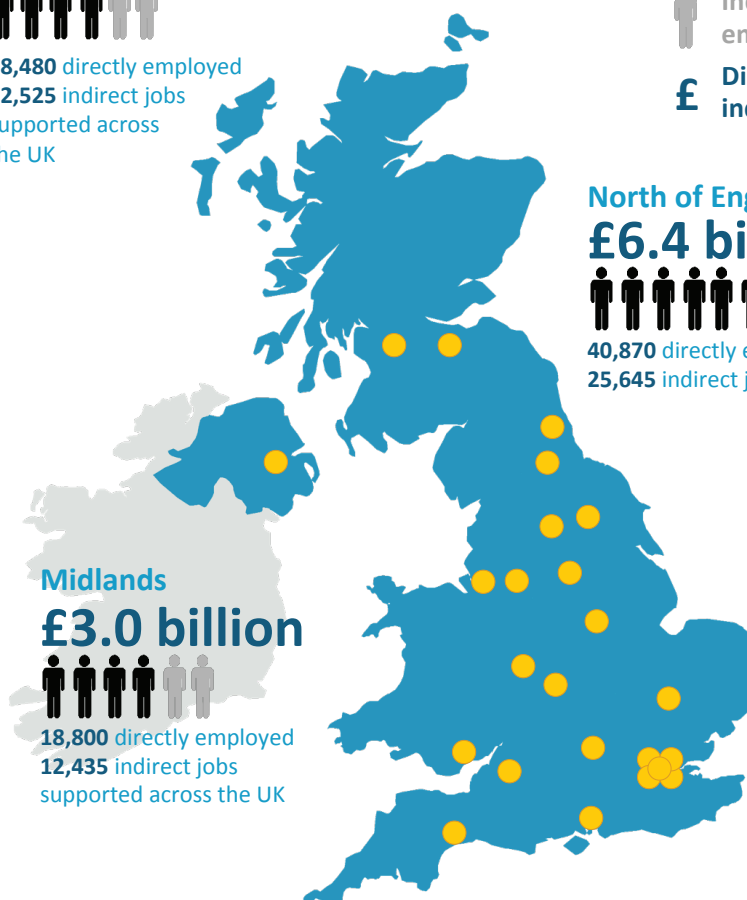


-  Direct employment
-  Indirect employment
-  Direct, indirect and induced impact

North of England
£6.4 billion



40,870 directly employed
25,645 indirect jobs supported across the UK



Midlands
£3.0 billion



18,800 directly employed
12,435 indirect jobs supported across the UK

South and East of England
£6.4 billion



28,450 directly employed
23,070 indirect jobs supported across the UK

South West and Wales
£2.4 billion



15,145 directly employed
10,665 indirect jobs supported across the UK

London
£5.9 billion



31,270 directly employed
24,110 indirect jobs supported across the UK

The Russell Group represents 24 leading UK universities which are committed to maintaining the very best research, an outstanding teaching and learning experience and unrivalled links with business and the public sector.

- University of Birmingham • University of Bristol • University of Cambridge • Cardiff University • Durham University
- University of Edinburgh • University of Exeter • University of Glasgow • Imperial College London • King's College London
- University of Leeds • University of Liverpool • London School of Economics and Political Science
- University of Manchester • Newcastle University • University of Nottingham • University of Oxford
- Queen Mary University of London • Queen's University Belfast • University of Sheffield • University of Southampton
- University College London • University of Warwick • University of York